

Lafayette-Moraga Regional Trail Historic Walking Experience

Prepared by Shane Reisman
March 6, 2024

Agenda

- 1 Introductions

- 2 Lafayette-Moraga Regional Trail

- 3 Lafayette-Moraga Regional Trail Through Time

- 4 Lafayette-Moraga Regional Trail Proposal

Introductions

My name is Shane Reisman

- Lafayette resident
- Member of local and state historic societies
- Experience with historic walking trails in other cities
- Help direct public-private partnership activity for local parks and trails initiatives
- Currently serve on Lafayette Parks, Trails and Rec Commission, but acting as a private citizen



Concept

Lafayette-Moraga Regional Trail Historic Walking Experience

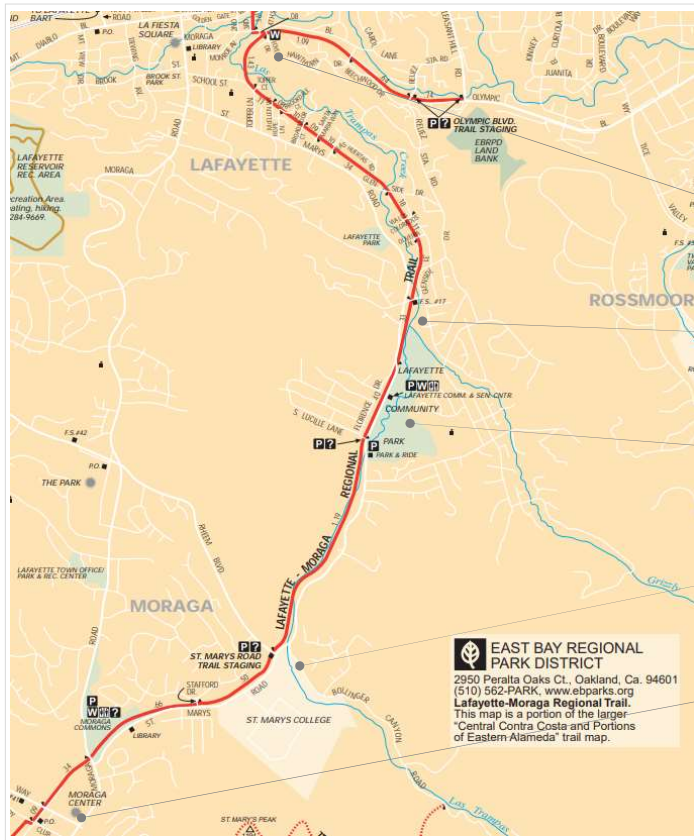
New interpretive walking experience to educate visitors about the culture, history and regional importance of the iconic Lafayette-Moraga Regional Trail.

Use existing panels and trail features to create a consistent experience with potential to expand deeper into surrounding parks.



EBRPD Lafayette-Moraga Trail

Lafayette-Moraga Regional Trail



EBRPD Lafayette-Moraga Trail Map

7.65-mile pedestrian, bicycle, and equestrian EBRPD Interpark trail. Runs between Lafayette and Moraga and connects Las Trampas Ridge to the Oakland Hills.

Provides a connection to the Briones and Las Trampas Regional Trail via 3rd Street in Lafayette

Parallels St. Mary's Road through the Moraga Valley

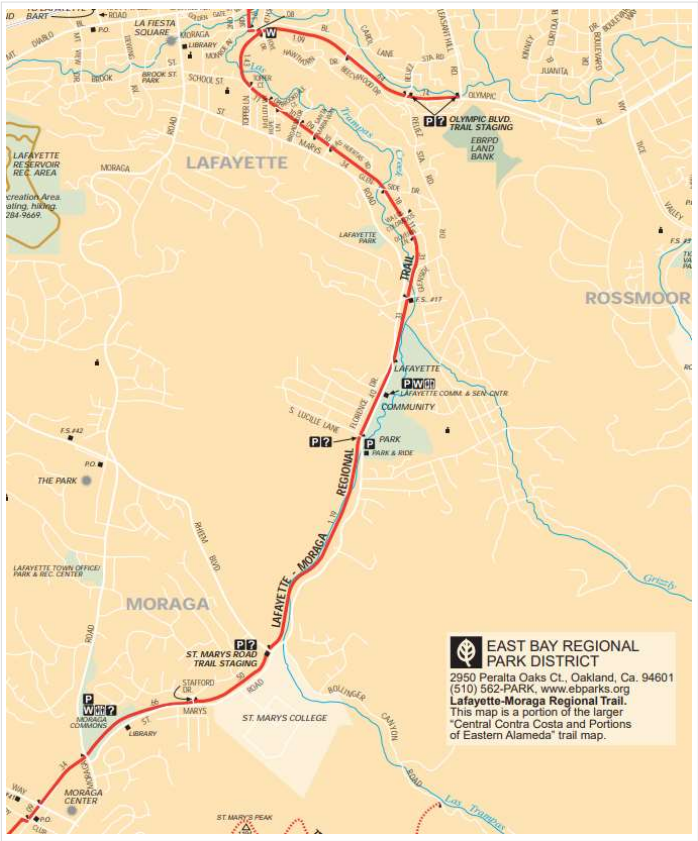
Passes through the Moraga Commons park in Moraga and near the Lafayette Community Park in Lafayette

Passes several schools, Saint Mary's College and Joaquin Moraga Intermediate School and Lafayette Elementary School

Terminates in Moraga at the EBMUD Valle Vista staging area, connecting to EBMUD trails, including Redwood and Rocky Ridge

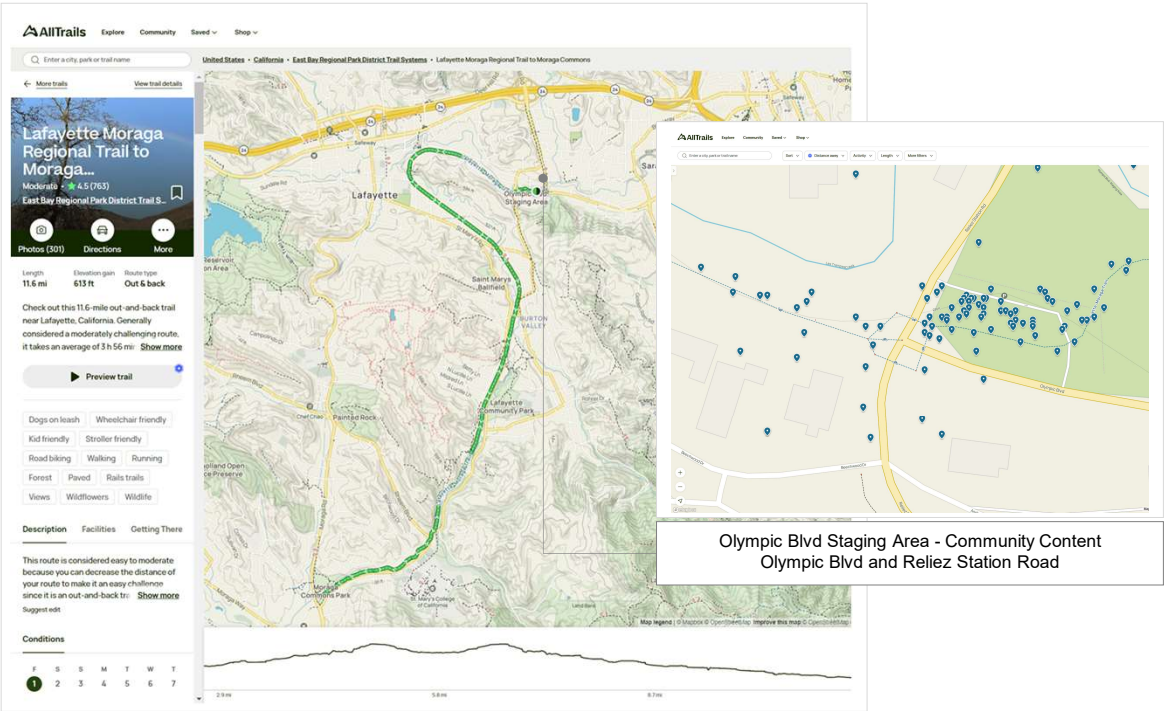
LAFAYETTE-MORAGA REGIONAL TRAIL HISTORIC WALKING EXPERIENCE

Lafayette-Moraga Regional Trail
#1 AllTrails East Bay Regional Parks Trail



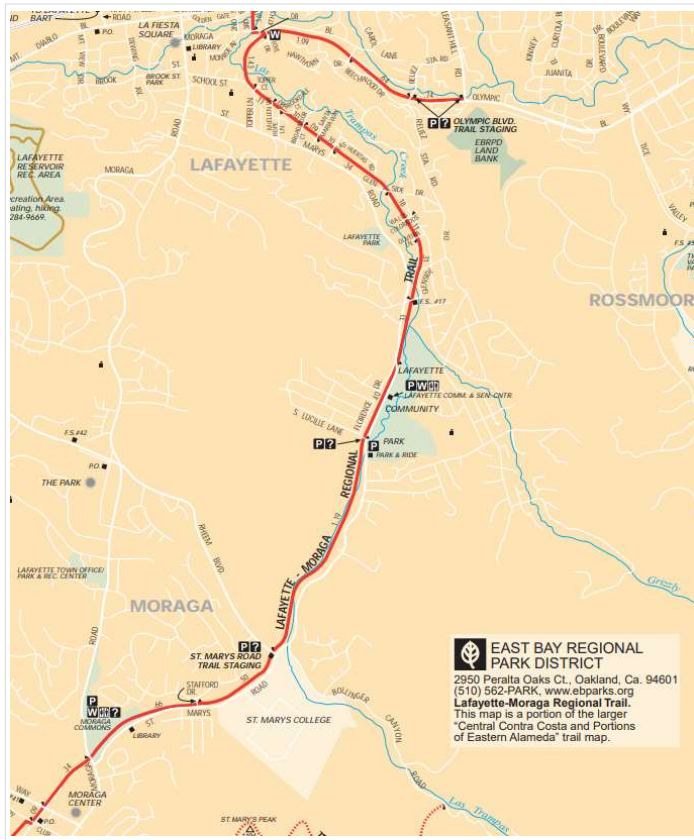
EBRPD Lafayette-Moraga Trail Map

Lafayette-Moraga is the most active AllTrails trail in the EBRPD system
[753 Reviews](#) | [301 Photos](#) | [786 Completed](#) | [1,182 Activities](#)



Lafayette-Moraga Trail Map in AllTrails Desktop

Lafayette-Moraga Regional Trail Through Time

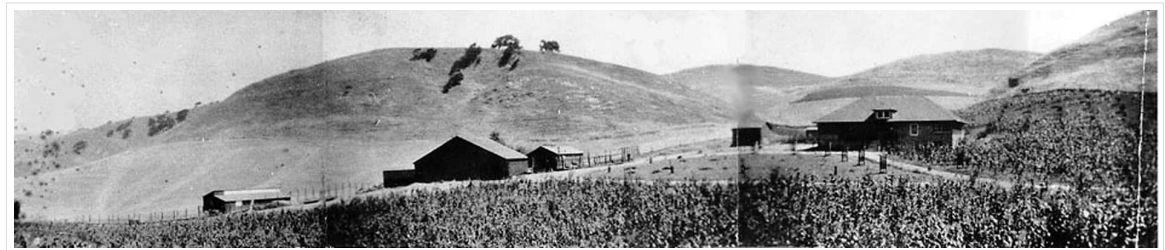


EBRPD Lafayette-Moraga Trail Map

A rich and varied history along the old Sacramento Northern Railway corridor

- First used by mule trains, then steam trains to carry redwood lumber from Oakland to Sacramento until the mid-20th Century
- Passed into a utility easement and remained vacant until residents of Lafayette and Moraga partnered with EBRPD to convert into a paved multi-use trail
- The first segment opened in 1976 as one of the nation's first rail-trails

The corridor is a lens into local history and our shared experiences with past inhabitants, like the Saclan Indians, Spanish Explorers and American settlers

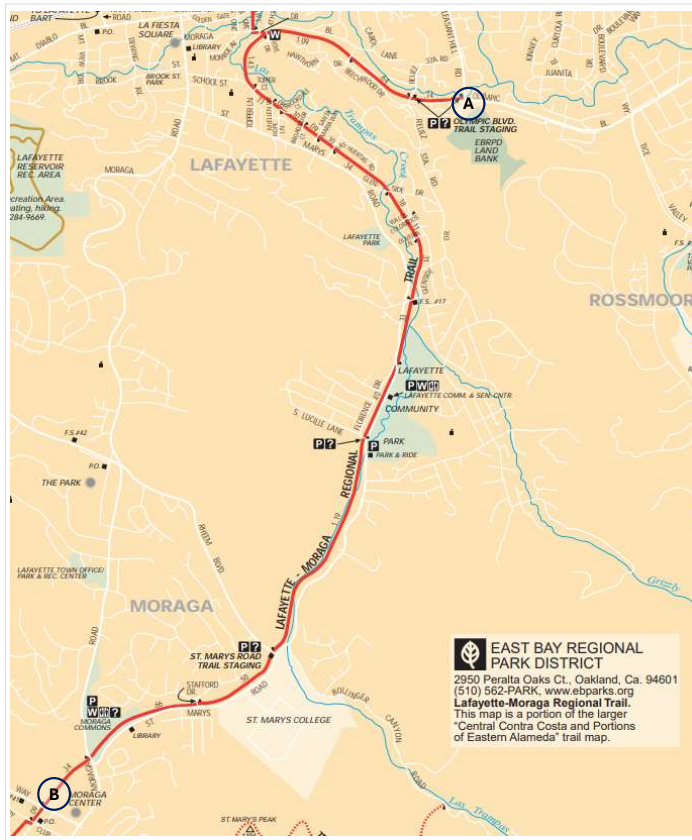


Lafayette-Moraga Early Settler Landscape

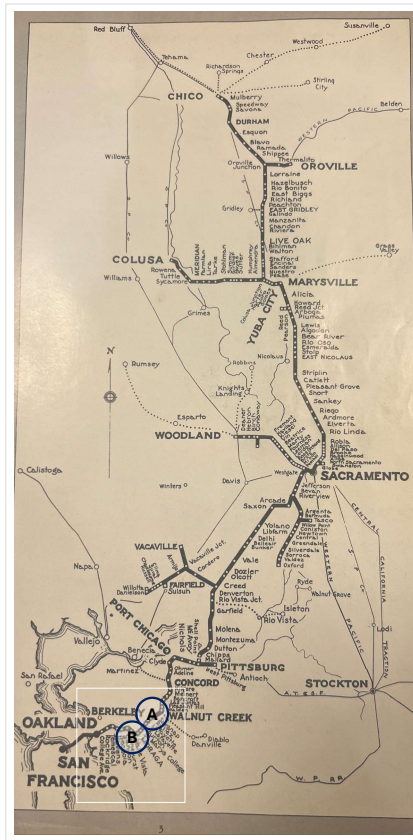
The Louis Stein Sr Ranch, pictured here in 1920, just east of present day Acalanes High School. The ranch delivered eggs weekly to restaurants in Berkeley.

LAFAYETTE-MORAGA REGIONAL TRAIL HISTORIC WALKING EXPERIENCE

Lafayette-Moraga Regional Trail Through Time



EBRPD Lafayette-Moraga Trail Map



EBRPD Lafayette-Moraga Trail Map

Prepared by Shane Reisman

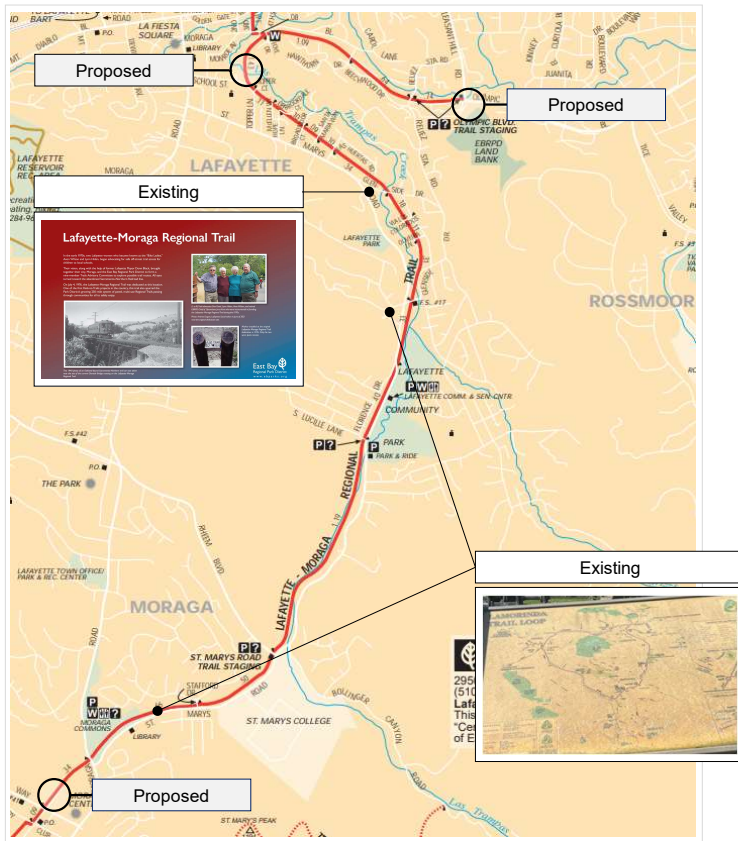
183-mile Sacramento Northern Railway

- SF to Chico via Sacramento, $\frac{3}{4}$ -mile long tunnel through Oakland Hills and a Ferry across Suisun Bay
- Commuter trains from Pittsburg and Concord to SF, streetcars in Sac, Marysville-Yuba City, and Chico
- Fastest way to get from the Bay Area to Sacramento in the 1930s, two hours and forty-seven minutes



Dining, parlor cars and coaches along local lines

Lafayette-Moraga Regional Trail Proposal

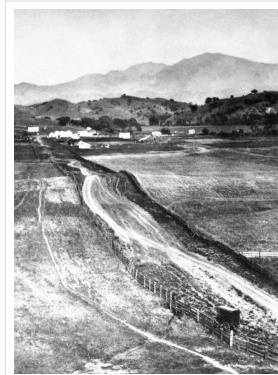


Lafayette-Moraga Regional Trail
Interpretive Panel Locations (Proposed)

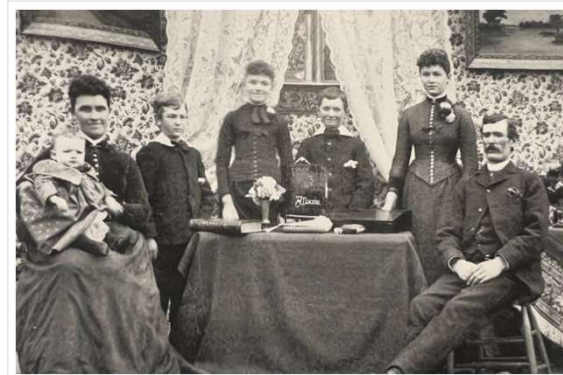
Partner with community members and local historic societies to launch a newly imagined EBRPD interpretive design for the Lafayette-Moraga Regional to:

- Tell local stories about our shared culture, history and resources along the iconic corridor
- Drive more Interpark trail activity from the most popular EBRPD destinations
- Refresh existing panels for a consistent experience across Moraga, Lafayette and beyond

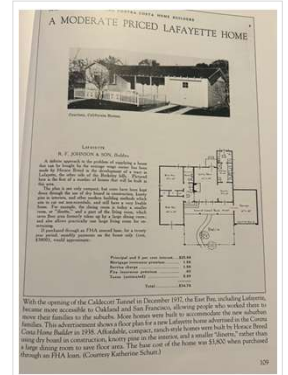
Mexican Ranchos



Early Days



Historic Houses



Thematic areas or historic stories (Proposed)

Prepared by Shane Reisman

Next Steps

Validate concept

Identify potential follow-up timeline

Propose locations

- Olympic Blvd Staging
- 3rd Street in Lafayette to identify connection to the Briones to Las Trampas Regional Trail
- Refresh existing signs

In collaboration with



Moraga Historical Society



Prepared by Shane Reisman